



# ANATOM 32 Fit

# ANATOM 64 Fit

FIT YOUR BUSINESS & SUCCESS



Insight into life

## Shenzhen Anke High-tech Co., Ltd.

**Address:** Block B, LingYa Industrial Zone, Tangtou No.1 Road,  
Bao'an District, Shenzhen, 518108, P.R. China





**Tel:** +86-755-21622518 26688889

**Fax:** +86-755-26695307 26685908

**Email:** anke@anke.com

**Website:** www.anke.com

### Follow us on:

-  ANKE(@ankeint)
-  ANKE(@ankemri)
-  ANKE(@ankemarcom)
-  Shenzhen Anke High-tech Co., Ltd



# Fit Your Costs

## ANATOM 32 Fit / ANATOM 64 Fit

The healthcare market is changing and transforming, cost effective CT scanner is increasingly becoming the expectation for basic clinical applications. Healthcare providers therefore have to manage an increasing number of patients at lower costs. Now comes ANATOM 32 Fit / ANATOM 64 Fit! ANKE has brought you the best outcomes to fit your business and success with the excellent performance of ANATOM 32 Fit / ANATOM 64 Fit.

ANATOM 32 Fit / ANATOM 64 Fit is affordable and, of course, versatile to easily handle with all basic clinical applications in routine scanning. Thoughtfully, ANATOM 32 Fit / ANATOM 64 Fit is designed to deliver you benefits of diagnostic confidence, low dose for patient care, financial performance and excellent clinical application.



ANATOM 32 Fit / ANATOM 64 Fit is an economic product specially designed for routine clinical applications. Streamlined workflow and superior comprehensive clinical functions greatly improve the clinical excellence, operational efficiency and profitability.



Low total power consumption and AccuSaving energy saving technology remarkably reduce your daily running cost.



Equipped with the worldclass high end X-ray tube and HV generator, especially ANKE's proprietary detector with long lifetime and high efficiency



Small X-ray tube and HV generator will remarkably reduce your cost of replacement after warranty.

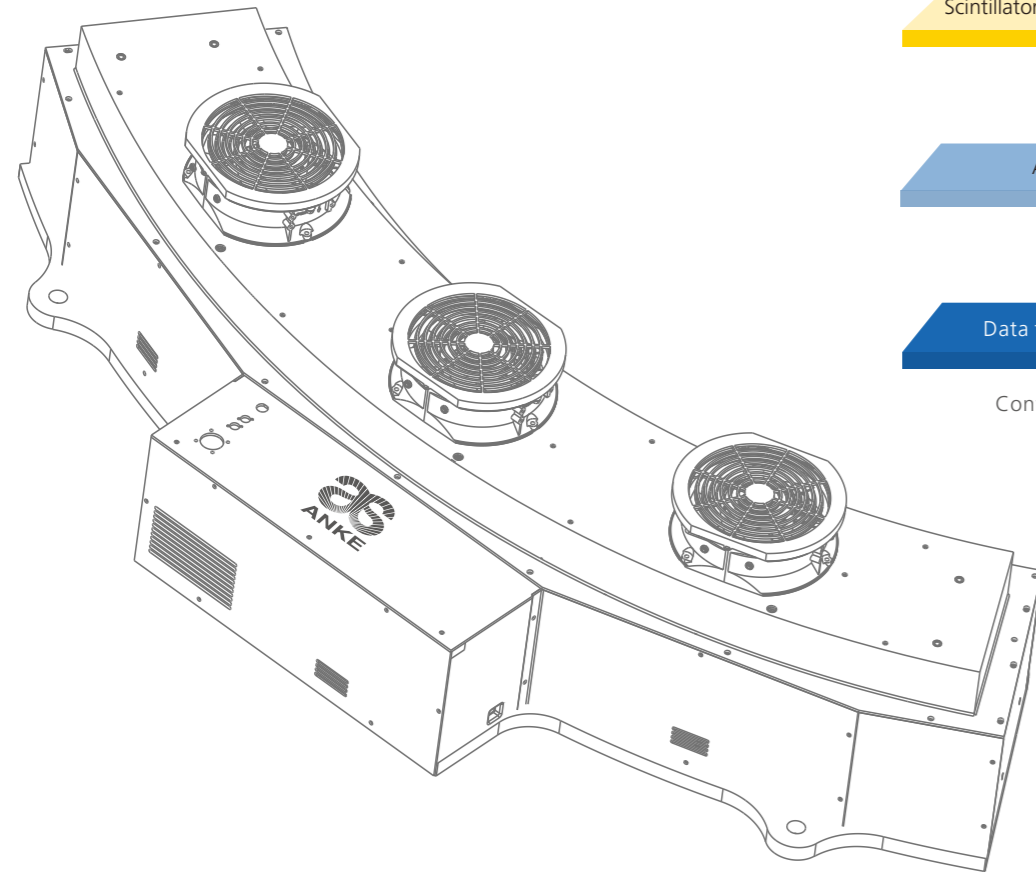
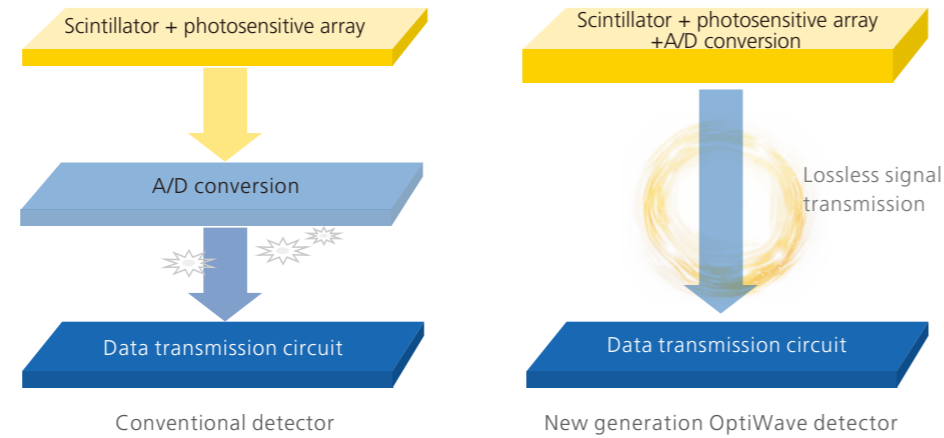


Small size and energy consumption require you less facility cost

# Fit Your Technologies

The newly designed ANATOM 32 Fit / ANATOM 64 Fit adopts the world leading technologies inherited from precision technology platform. The latest new generation OptiWave detector and innovative precision fast scanning technology are combined with Admir<sup>3D</sup> iterative technology to achieve lower dose and lower consumption but higher image quality.

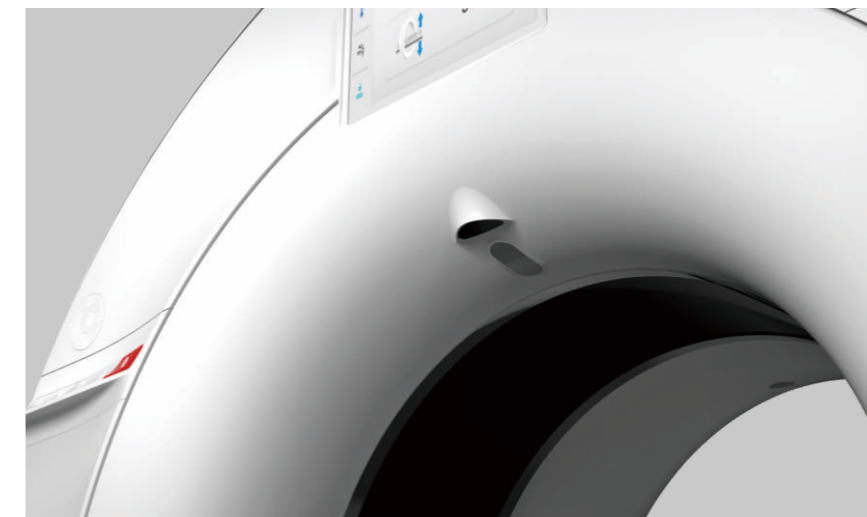
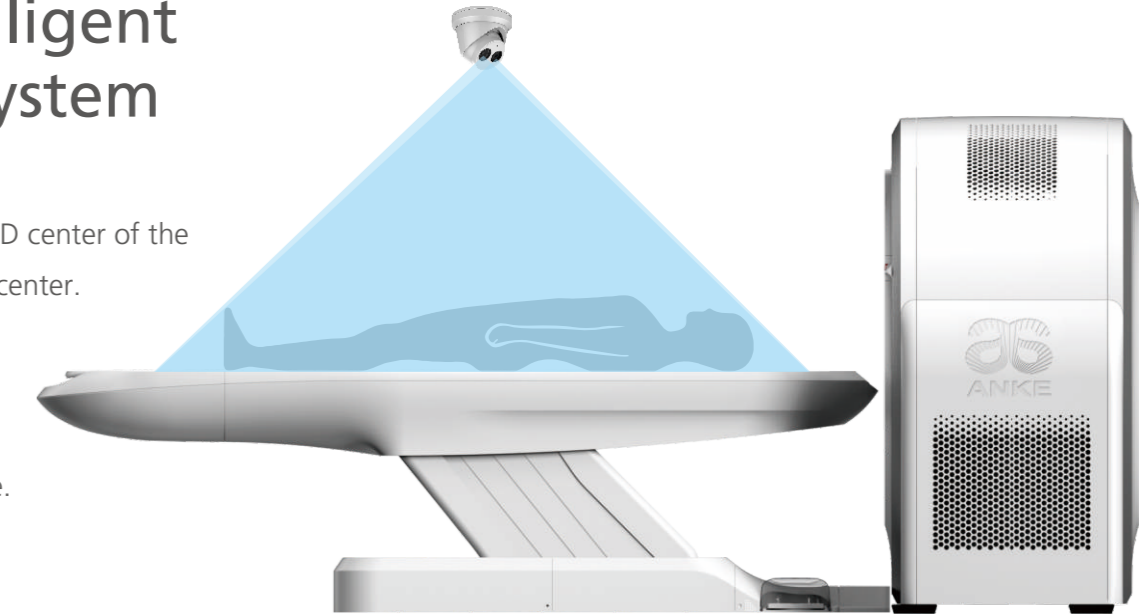
## New generation OptiWave detector



## \*AccuPositioning-intelligent sky-eye positioning system

"sky-eye" camera can intelligently recognize the 2D center of the scan range and automatically aligns it with the isocenter.

With one click, AccuPositioning uses all of this information to automatically center your patient for a completely hands-free positioning experience.



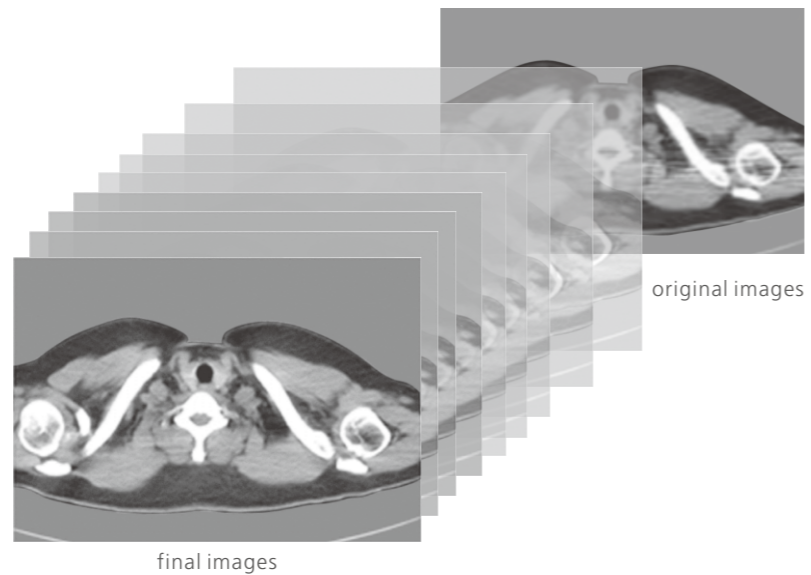
## \*AI Artifact Suppression

Gantry's built-in camera - "Eagle Eye" allows real-time monitoring of the patient's status, together with the AI-based AccuClear function, and enables intelligent real time image artifact correction.



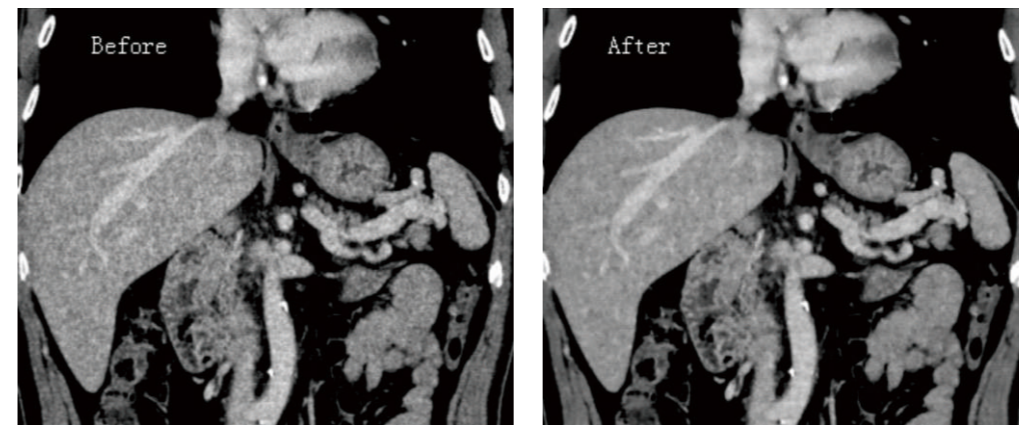
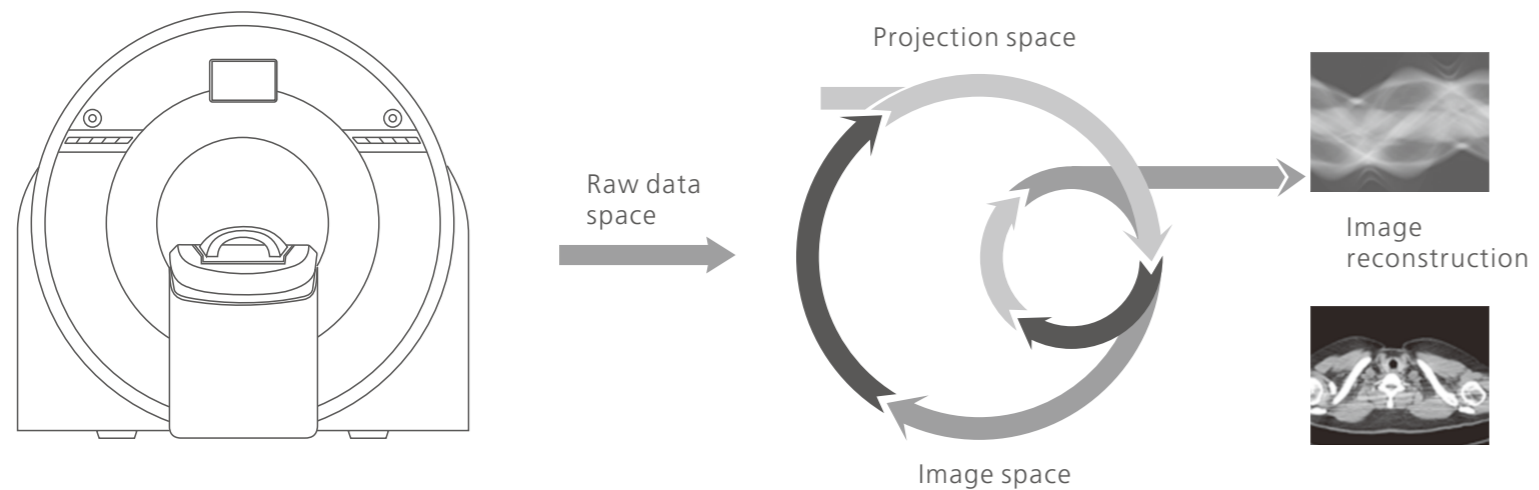
## Admir<sup>3D</sup> iterative reconstruction technology

Admir<sup>3D</sup> applies mathematical and physics models to accurately construct and describe the signal's quantum characteristics. Iterative operations are performed in the three spaces of raw data, projection and image, to greatly reduce the image noise and achieve optimal image quality with low dose.

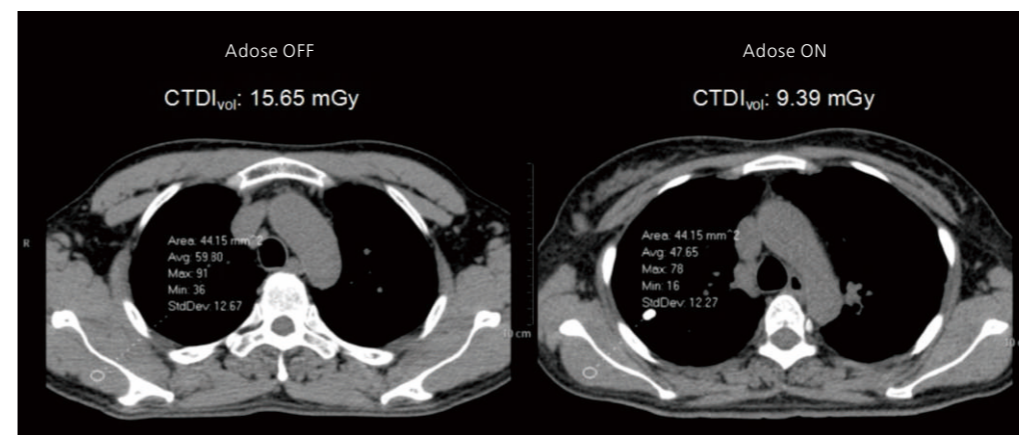


Reconstruction speed: 30 Frames/second  
Note: the 30 fps is without Admir<sup>3D</sup>

## Raw data acquisition



Dose reduction by 45%



## Fit Your Dose

Adose Dose management platform

Automatic mA technology automatically controls tube current to increase or decrease the signal as necessary to maintain constant image noise while lowering dose

Pediatric dose optimization - specially dedicated protocols for pediatric patients with ultra-low dose care

Admir<sup>3D</sup> can achieve low dose and low noise scanning without compromising image quality

Dose monitoring - A comprehensive dose management solution, based on principle of as low as reasonably achievable (ALARA), tracks and monitors patients, cumulative radiation dose, and receives notifications and alerts if your predetermined dose levels exceeded

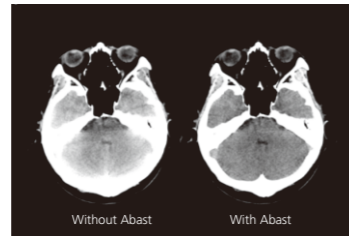
# Fit Your Applications

## AccuOrgan-Targeted organ imaging

To achieve high precision imaging of each part of human body at low dose and low energy consumption

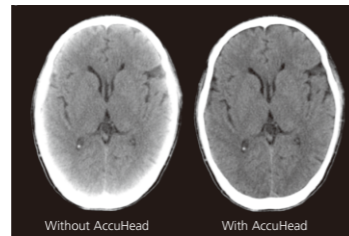
### Abast-Bone artifact suppression technology

Abast eliminates the X-ray beam hardening effects to the cerebellum, brain stem and other parts of the brain and clearly shows the structure and lesions of the brain stem and cerebellum.



### AccuHead-Gray & white matter enhancement technology

AccuHead technology is specifically designed for brain scans to improve the contrast between gray matter and white matter without sacrificing image quality.



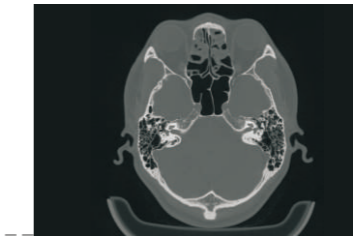
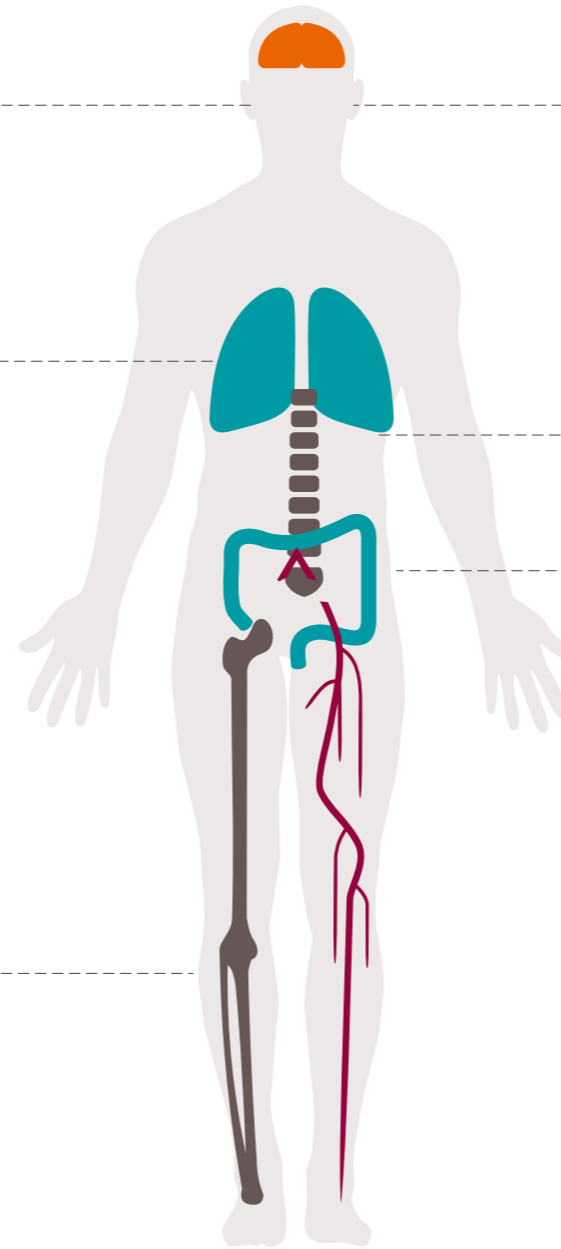
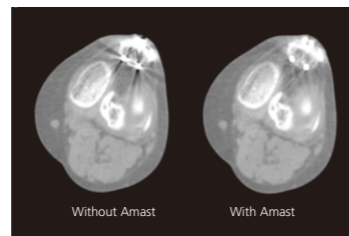
### AccuOrgan-High resolution lung imaging

High resolution images of the lung can be obtained at only 30%~40% of conventional radiation dose



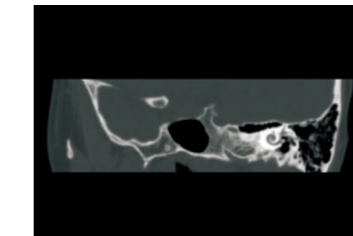
### Amast-Metal artifact suppression

Dual-domain iteration is adopted to effectively remove metal artifacts and restore the soft tissue around the metal



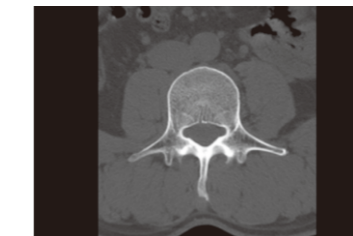
### AccuImage-Microscopic imaging technology

1024x1024 matrix to display more details of the pathological changes and provide reliable information for early detection, early diagnosis and early treatment of the diseases



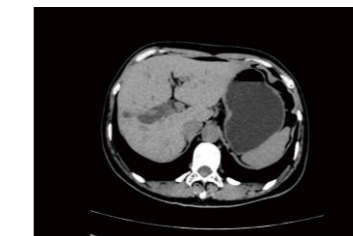
### AccuOrgan-Inner ear imaging

Professional high resolution inner ear imaging clearly shows the cochlear vestibular, semicircular canals and other fine anatomical parts, ensuring detection rate of small lesions



### AccuBone-High resolution bone imaging

Enhanced bone edge contrast can provide accurate anatomic relationships and show early destruction and cyst of subchondral bone like lesions and articular cartilage calcifications

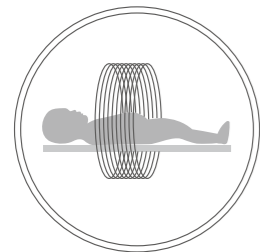


### AccuOrgan-Body high resolution imaging

Combined with the AccuImage microscopic imaging technology, AccuOrgan technology can significantly increase the display of fine structure and morphology of the abdomen and provide more accurate images for the early diagnosis of small lesions

# Fit Your Care

AccuDose-Comprehensive low dose imaging



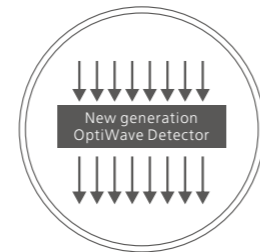
Pediatric Scan Protocol



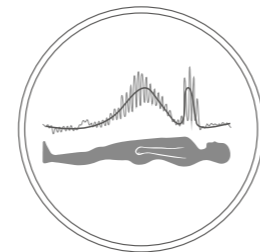
Individual Dose Monitoring



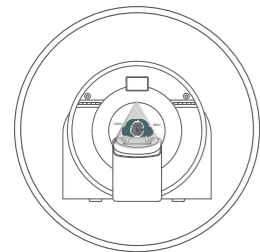
AccuShape Filter



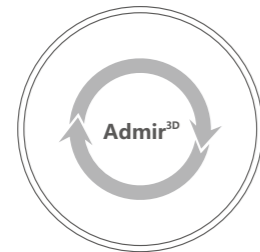
Efficient Detector



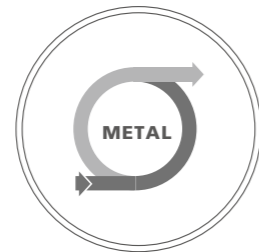
Adose Dose Modulation



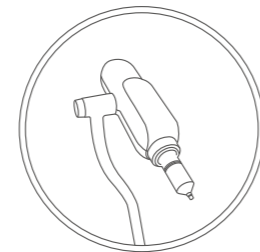
AccuSpin



Iterative Reconstruction



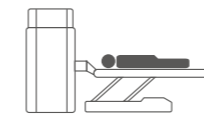
Amast



Contrast Agent Tracking Technology

# Fit Your Efficiency

AccuScan-Enjoy easy convenient and efficient operation process greatly improve clinical efficiency to achieve high patient throughput



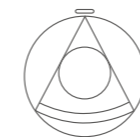
## AccuOrientation

Preset intelligent positioning procedures to enable one-button accurate patient positioning



## AccuEmergency

Skip patient registration for emergency scansto save time



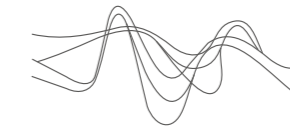
## AccuScanning

Carefully designed default scan protocols help to get high quality images with ease



## AccuTracing

Automatic bolus tracking to trigger the scan for precise scan timing



## AccuReconstruction

Up to 65 frms / sec real-time reconstruction



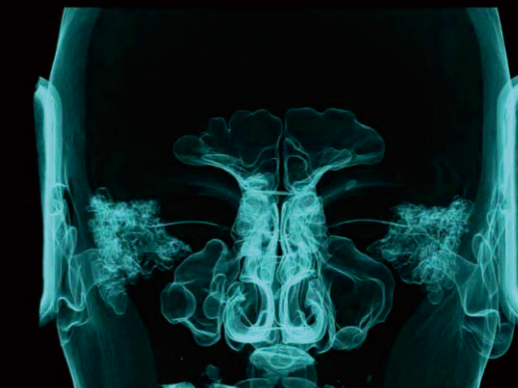
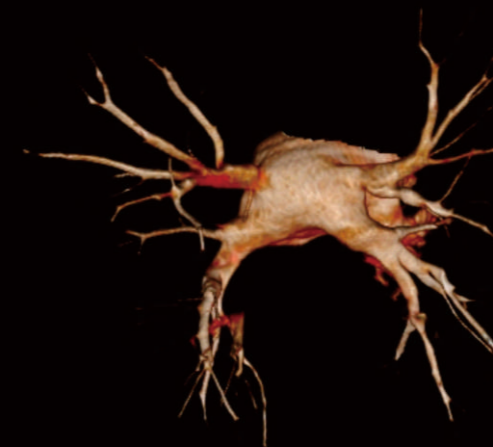
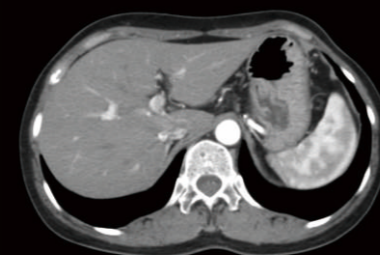
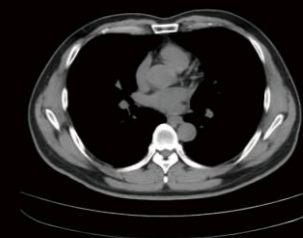
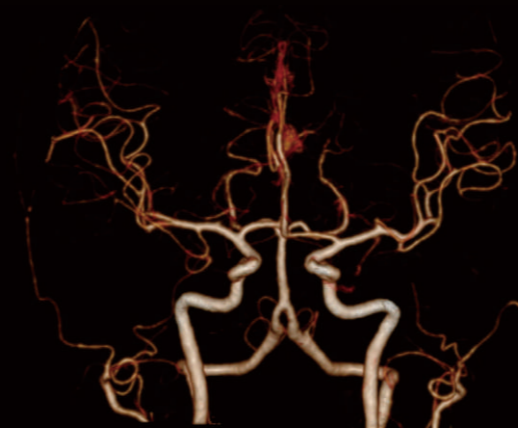
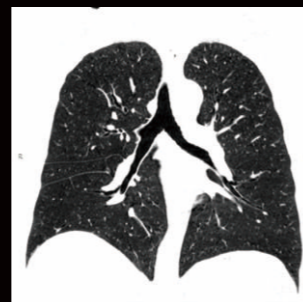
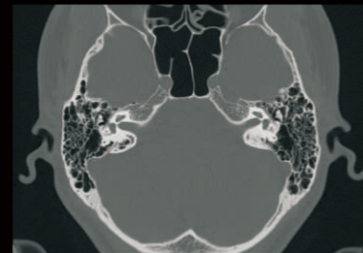
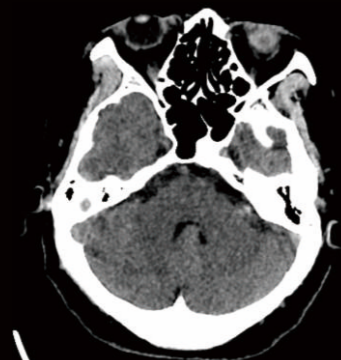
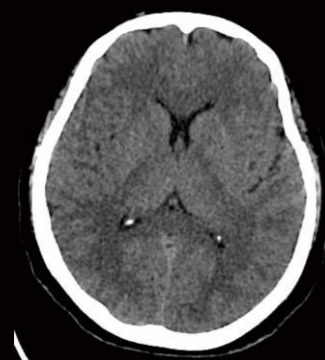
## AccuPrinting

Intelligent typesetting and quick printing to save time



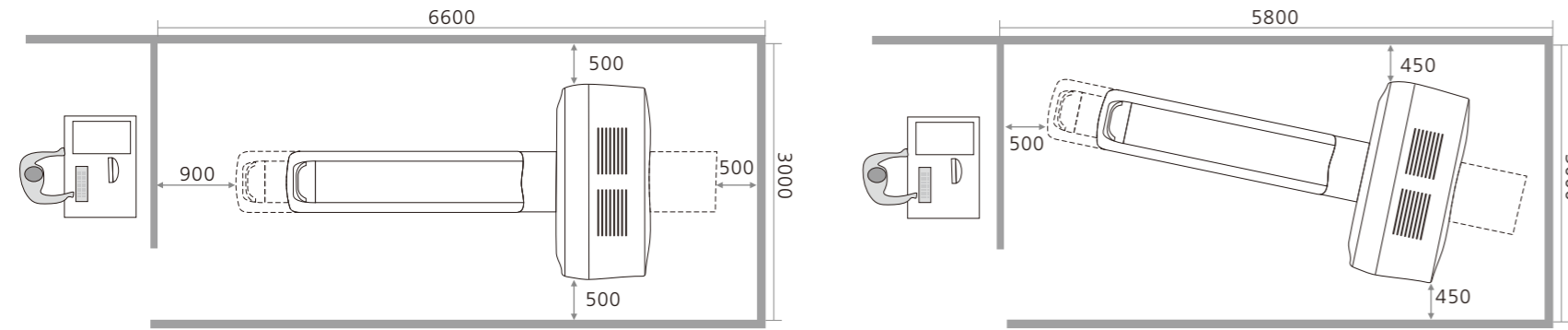
# Clinical Applications

Fast, precise and low-dose imaging technologies provide a full range of clinical solutions to meet the current and future clinical diagnostic needs



# Fit Your Space

ANATOM Fit has been so compactly designed and engineered to meet the clinical needs of hospitals and facilities with room limitations. The compact footprint and low power demands enable the ANATOM Fit to easily install into many single and dual slice CT rooms. Contact us for specific requirements about optional imaging/viewing/power equipment, floor space and electrical, mechanical, structural or environmental specifications.



# Fit Your Energy

## AccuSaving Green & Energy-saving

AccuSaving is an innovative energy saving technology. The system will enter the "dormant", which is a low carbon mode, after a certain stand-by time or per user's request. To bring the system back to work status is as easy as to push a button. The system will also remind the user to perform necessary warm-up and calibration procedures, which are fully automated processes. AccuSaving technology can reduce operation and standby power consumption, save the electricity cost by 30% by adopting different operation modes in working and off hours



Intelligent segmented sleep



Low power consumption



Low heat dissipation

From the moment you choose ANKE, our all-round cooperation begins. Once you are in ANKE's global customer service system, you will experience a complete service solution that is all you expect, all you want and all you need.



### Service Platform

- 24-hour call centre service
- Spare parts guarantee in the spare parts centre
- Professional tools for efficient insurance



### Service Quality

- One-to-one service by technical experts
- Preventive maintenance
- Timely detection of hidden problems



### Service Network

- Over 100 engineers
- Over 30% technical experts
- R&D-led technical support centre



### Service Efficiency

- Remote support
- Fast problem solving
- Efficient dispatch to reduce time